

Transforming
Community Care

□ Chairman's Message	02
□ CEO's Message	04
□ Vision & Mission	06
□ Core Values	07
□ Board Of Directors	08
□ Management	10
□ Our Year In Numbers	12
□ Working with Our Partners	14
□ Heritage Wall	16
□ Patient Stories	20
□ Our Rehabilitation Initiatives	22
□ Our Achievements	24
□ Looking Towards The Future	28
□ Our Volunteers	30
□ Fundraising For Our Patients	31



Contents

Chairman's Message

St Luke's Hospital is 20 years old.
We are still *young, learning* and *growing*.

During the early years when we were establishing ourselves in society, the idea of a community hospital then was very new to the residents at Bukit Batok. They were unsure of what goes on in a community hospital and the type of patients who would visit the hospital. Some thought we were a hospice. Since the hospital was close by the residential area, it raised some eyebrows.

The pioneer staff did a great job in reaching out to the residents, reassuring them that the hospital did not pose any risk. With the help of the community leaders, they held regular meeting sessions with the residents, explaining to them the concept and the reasons behind setting up a community hospital in Bukit Batok.

Through the years, the residents warmed up to our presence and St Luke's has grown from strength to strength. We have increased the number of beds, expanded our services and added new facilities and eldercare centres islandwide. We have seen an increase in the number of patients, whose conditions are more complex. To meet the different medical needs of our patients the team works closely with the community, corporate partners and volunteers.

The numbers of our corporate partners and volunteers have grown because of the strong relationships we built with them over the years. They bring with them different skills and experiences. With them on-board, we can widen our reach and provide medical care that is well thought through and seamless for our patients.

Our generous donors are another group who have been a great help in our journey. I want to take this opportunity to thank them, for giving so magnanimously to St Luke's.

St Luke's is always looking to grow and we are aware of the challenges ahead. However, thankfully, we are not alone in our journey. Our corporate partners, volunteers, donors and the residents help to form a strong foundation, supporting the next generation of healthcare administrators at St Luke's Hospital. With them on our team, we are confident the next 20 years will be a success.



Dr Peng Chung Mien
Chairman, Board of Directors
St Luke's Hospital

CEO's Message

2016 is a very special year for us. It is the **20th Anniversary** of the founding of St Luke's Hospital. This is a year when we thank the Lord and celebrate 20 years of **Serving, Loving and Healing**.

St Luke's Hospital today is very different from the one that started in 1996. We added a new wing, an outpatient services clinic, refurbished and increased the number of wards and introduced new services to serve the community in Bukit Batok.

All of this would not have been possible without a strong foundation laid by our pioneers. When they started, they faced many challenges, including finding a suitable location, getting the funds to support the hospital, working with the residents, and ensuring that the hospital will blend in with the community. Working together with our partners, the community and its leaders, their faith in us gave us strength during the early years.

As we've grown over the years, we've worked closely with the community, strengthening our bonds with them and becoming nurturing partners in serving the residents of Bukit Batok.

In October 2015, we held a health-screening event called Project Silvercare for the elderly. We collaborated closely on this project with students from the Yong Loo Lin School of

Medicine, Alice Lee Centre for Nursing Studies, the Department of Pharmacy and Dentistry from the National University of Singapore as well as the team from VWO Concern and Care Society.

We have also been working closely with the National University Health System (NUHS) to facilitate patient transition from National University Hospital (NUH) to St Luke's Hospital (SLH).

In February 2016, we launched the Super Fast Track programme for NUH inpatients to SLH. Targeted at stroke and orthopaedic patients, NUH Ward Team and Care-Coordinators assess the suitability and stability of NUH patients for next-day-transfer to SLH. This partnership allows for a streamlined referral process as we process a referral application within 24 hours.

The future of St Luke's Hospital looks exciting. Our nurses have been actively sharing their knowledge on wound management with fellow health professionals over the years. They started with the wound conference in 2007 and participants have increased by four-fold since its inception. To continue their good work,

we are currently setting up our Community Wound Centre to train the next generation of nurses in wound care management in the Intermediate and Long Term Care (ILTC) sector. The Community Wound Centre will have a wound ward, with a focus on education, training, research and development.

Our dementia care team has also been busy working with general practitioners (GPs) around the community to raise awareness in dementia care. The dementia ward has changed over the past few months, becoming an area that is comfortable and inviting for our patients, their families and caregivers.

Many on the management team and staff members have been with us since the early days. We have added the right people over the years to our core, assimilating them into our culture to take St Luke's Hospital forward.

Our church and corporate partners, donors, volunteers and service providers are also key in our growth. I would like to thank them for their steadfast support and unyielding efforts as they journeyed with us in transforming community care over the years.



Lim Hock Chuan
Chief Executive Officer
St Luke's Hospital

Health Care



Vision

Transforming Community Care

Mission

To be a Christian healthcare provider enriching lives in the communities.

Core Values

Teamwork

Compassion

Stewardship

Holistic
Excellence

Integrity

Respect

Board of Directors



Dr Peng Chung Mien - Chairman
Elder, Bethesda (Bedok – Tampines) Church
Graduates' Christian Fellowship



Dr Ernest C. T. Chew - Vice Chairman
History Consultant, Findings Education
Bethesda (Frankel Estate) Church



Mr Jeyaraj Indra Raj - Secretary
Partner, Harold Seet & Indra Raj
Wesley Methodist Church



Mr Choo Eng Beng - Treasurer
Partner, PricewaterhouseCoopers
Church of Singapore



Mr Khoo Teng Cheong
Managing Director, Group Head,
Learning & Talent Development, DBS Bank,
Bethesda Katong Church



Ms Chor Swee Suet, Judy
Senior Deputy Director
Youth Preventive Services Division
Singapore Nurses' Christian Fellowship



Mr Chua Song Khim
Chief Executive Officer
NTUC Health Co-operative Limited



Prof Ho Yew Kee
Head, Department of Accounting
NUS Business School



Mr Victor Lim Teck Chuan
Deputy General Manager
(Convenience Business), NTUC Fairprice
Bartley Christian Church



Mr Samuel Tan Chee Koon
Exco Member of Presbyterian
Community Services

Honorary Advisor

1. **Mr S. Dhanabalan**
Former Chairman
Temasek Holdings

2. **Mr Quek Mong Hua**
Senior Partner
Lee & Lee
Bethesda Frankel Estate Church

5. **Ms Tan Wee King**
Singapore Nurses
Christian Fellowship

Alternate Members

1. **Mrs Helen Ko**
Executive Director
Beyond Age Pte Ltd
Bartley Christian Church

3. **Mr Francis Maniam**
Church Elder
Bethesda Katong Church

6. **Dr Danny Ng Bock Hon**
Clinical Director
Renovaré Pte Ltd
Wesley Methodist Church

4. **Mr Allan Wong Kwok Wai**
Chairman, CRIG & COCM
Graduates' Christian Fellowship

7. **Mr Jonathan Kok Hei Mun**
Partner
RHTLaw Taylor Wessing LLP

Management



1. Mr Lim Hock Chuan
Chief Executive Officer

2. Dr Kenny Tan
Chief Operating Officer

3. A/Prof Tan Boon Yeow
Medical Director Medical Services

4. Ms Susie Goh
Director of Nursing
Nursing Services

5. Mrs Margaret Au
Deputy Director
Community Wound Centre

6. Ms Agnes Hew
Deputy Director
Corporate Strategy &
Performance office

7. Ms Leo Bek Hoon
Deputy Director
Human Resource & Administration

8. Mr Sitoh Tuck Cheong
Deputy Director
Finance

9. Ms Cheung Siew Li
Principal Medical Social Worker
Assistant Director
Care and Integration Department

10. Ms Jenny Oo
Assistant Director
Pharmacy

11. Mr Daryl Tan
Assistant Director
IT Division

12. Ms Tan Bee Ker
Chaplain
Chaplaincy Department

13. Mr Tang Khee Chim
Senior Manager
Facilities & Operations

14. Mr Gribson Chan
Deputy Director
Rehabilitative Services
(Not in photo)

Our Year In Numbers

Inpatient



Number of patients admitted
2130

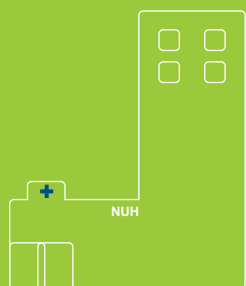


Occupancy rate
87%

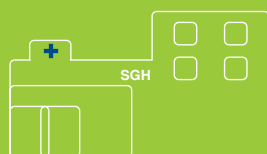


Percentage of patients admitted for rehabilitation
95%

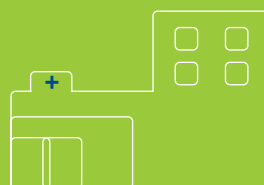
Percentage of referrals by:



NUH
63%



SGH
17%



Others
20%



76%

of patients discharged from St Luke's Hospital who improved significantly* in their ability to perform basic activities like personal grooming, visiting the toilet, feeding and moving about independently

*10 point or more improvement as measured by the Modified Barthel Index

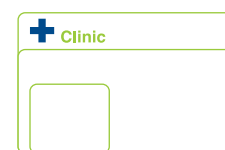
91%

of patients earn
\$2,600
a month or less

81%

of patients earn
\$1,800
a month or less

Outpatient



Number of outpatient clinic patients
1200



Number of day rehab patients
680



Number of homecare patients
435

Patient Satisfaction



Satisfaction rate
91%

Manpower

Distribution of staff



23
Medical



225
Nursing



121
Allied health

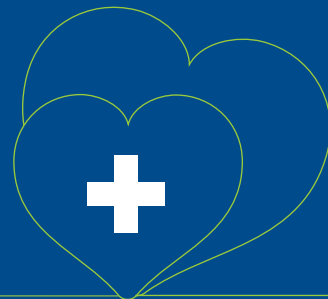


96
Admin

Working With Our Partners

Nowadays patients often move between healthcare institutions to seek medical care. This process is often time consuming and it takes its toll on patients and their caregivers.

Working with our partners, St Luke's Hospital is able to bring medical care to patients in **a timely manner**, giving their **families and caregivers assurance** that their loved ones are **well taken care of**.



St Luke's Hospital - National University Hospital Frequent Admitter (FA) Programme

In our efforts to support Ministry Of Health's aim of reducing hospital readmissions, St Luke's Hospital (SLH) collaborated with National University Hospital (NUH) to co-manage NUH FAs - defined as patients with three or more emergency hospital admissions in the preceding year who transit to SLH.

These patients who are at risk of social isolation, transit at SLH for recommended rehabilitation and sub-acute management. Following their discharge from SLH, the care co-ordinators (CC) from St Luke's follow-up on their care for 12 months.

SLH CCs make telephone calls and home visits to the patients, ensuring that they are coping well in the community. They also check if patients are taking their medication and going to follow-up appointments at St Luke's Outpatient Clinic, Day Rehabilitation and Day Care services. The CCs also refer caregivers and patients to community support services.

The partnership between SLH and NUH also allows our doctors to fast-track patients for early review at NUH Specialist Outpatient Clinic.

Since the launch of the programme in April 2015, we have managed about 110 FA patients.

therapy

Collaboration With NUH Assessment And Shared Care Team (ASCAT)

St Luke's Hospital collaborated with National University Hospital Department of Psychological Medicine to bring psychiatry specialist services into the community.

Sited at St Luke's Outpatient clinic since January 2016, this service collaboration aims to provide timely assessment and stabilisation of at risk adults (aged 35 - 65) with

mental health disorders (mild to moderate cases of depression, anxiety and insomnia). It also encourages capability building of primary care doctors. This greatly complements our current psychiatry service offerings for elderly patients with dementia and depression.

Patients are referred through our partners such as the polyclinics,

Family Service Centres and private GPs nearby. As we are in the community, this makes it convenient for our patients as they can see medical professionals in a familiar setting.

Improving

Heritage Wahl

1999 - 2016



Heritage Wall

St Luke's Hospital was set up in 1996 by **8 Christian churches and organisations** to serve the needy elderly sick

1989

The GCF Executive Committee formed a committee and gathered the support of some members from the Singapore Nurses' Christian Fellowship and the Christian Medical and Dental Fellowship.

They did a **feasibility study** on what sort of elder care facility to develop.

The search for a suitable location was a challenge. The late Dr Ong Chit Chung, then Member of Parliament for Bukit Batok, suggested the committee could look at Bukit Batok.

This laid the groundwork for St Luke's Hospital.

1993 - 1995

Construction started in 1994 but the team faced some challenges along the way.

St Luke's Honorary Advisor, Mr S Dhanabalan, played a role in helping the team address these challenges.



1999

The idea to continue caring for the elderly beyond the hospital came soon after. **St Luke's ElderCare Ltd was formed in 1999** with the goal of providing a range of professional day care services to assist families to take care of their loved ones.

2001

The first four ElderCare centres – **Clementi, Hougang, Yishun and Whampoa** – were officially operational.

2003 - 2005

The hospital was renamed as St Luke's Hospital in 2004. As the demand for services grew rapidly, the hospital underwent a **massive make-over** carried out in two phases.

- St Luke's Hospital
- Added a new outpatient clinic
 - Upgraded the existing wards
 - Built new patient activity areas and a new lobby
 - Improved the hospital's landscape

St Luke's Hospital **embraced a contemporary new brand** as improvement works took place.

This unique symbol – a combination of a medical cross and the Christian cross – underscores the faith behind all that the hospital stands for. This new corporate identity ushered in the next era of **Serving, Loving and Healing**.

2008 - 2012

The demand for eldercare services grew and SLEC **added six new centres islandwide** in a space of three years.

St Luke's Hospital started to **build a new wing** in 2012 to meet the demand for healthcare services. 48 beds, a new chapel, a business office and administrative offices form part of the new wing.



2014

The new wing at **St Luke's Hospital was officially opened** by Health Minister Mr Gan Kim Yong.



1988

Pioneering members of the Varsity Christian Fellowship (VCF), later the Graduates Christian Fellowship (GCF), **pondered over the challenges the elderly would face** following a report by the Ministry of Health.

1991 - 1992

The biggest challenge was obtaining funding and approval from the Government. It was a novel idea, at that time, to have a hospital dedicated specially to the needs of the elderly sick. There was no such category under the Ministry of Health's funding scheme then. St Luke's Home for the Elderly Sick was incorporated in 1991.

A decision was made later on to set up a community hospital that catered to the needs of the elderly sick instead of a nursing home. **The organisation was known by a new name on 2 May 1992 - St Luke's Hospital for the Elderly.**

1996

Led by Nursing Director, Ms Roselin Liew, the hospital saw its first patient admission on 18 March 1996 when it opened its doors.

St Luke's Hospital was officially opened on 18 October, St Luke's Day, by Guest of Honour, Dr Aline Wong, the then Senior Minister of State for Health and Education.

By the end of 1996, the **hospital had a capacity of 5 wards and 151 beds.**



2003

St Luke's Hospital collaborated with National University Health System to develop integrated patient care plans through the coordination of admissions. Integrated care pathways were also created and partnerships on the academic front were formed. This signalled a new direction for St Luke's Hospital.

2007

The nurses at St Luke's organised the **1st Wound Conference**, bringing like-minded wound care practitioners and academics together to share their knowledge and expertise.



2008

St Luke's became the **first hospital in Singapore to introduce a new innovative therapy** called the Constraint Induced (CI) therapy to help stroke patients with upper limb disability gain more mobility.

2013

Mr Lim Hock Chuan took over from Mr Lee Chee Yeng as CEO of St Luke's Hospital and St Luke's ElderCare, leading the organisation into the new era.

St Luke's also launched the **new vision and mission**, and **core values**.



2016

Started phase **three renovation work at the hospital** for a new wound care centre and al fresco dining area.

St Luke's celebrated its **20th anniversary**.



+ Loving



+ Healing



Serving



Project Silvercare Health Screening

Project Silvercare (PSC) is an annual health-screening programme jointly organised by students from the Yong Loo Lin School of Medicine, Alice Lee Centre for Nursing Studies, and the Department of Pharmacy and Dentistry from the National University of Singapore as well as a VWO Concern and Care Society.

Through the years, PSC has maintained a strong focus in reaching out to the elderly

across Singapore. In 2015, they partnered with the Family Medicine residents from the National University Health System and St Luke's Hospital to offer residents at Bukit Batok a seamless post-screening follow-up process.

The programme focused on functional screening for the elderly, allowing the care team to identify those who are at risk early for common geriatric

conditions. This prevents deterioration in function and increases quality of life.

Over 250 participants visited St Luke's Hospital on 10 and 11 October 2015 for the screening.

Co-Managing Adult / Geriatric Patients With Bukit Batok Polyclinic In The Community

St Luke's Hospital (SLH) works with National Healthcare Group Polyclinics (NHGP) to refer suitable adult and geriatric patients from Bukit Batok polyclinic to St Luke's Outpatient Services.

Through this collaboration, SLH's suite of clinic and rehabilitation services can be extended to better

support the Bukit Batok population with chronic conditions, wound conditions, and geriatric syndromes such as impaired mobility, instability, impaired memory (dementia), incontinence (bladder and bowel), and psychiatry conditions (dementia, depression, delusional disorders).

This collaboration aims at increasing patients' accessibility to medical and rehabilitation services in the community, making it convenient for them to get medical help.



Healing

Stories



Another Shot At Life

Madam Waidabi was preparing dinner when she received a phone call from the hospital that changed her life forever. She broke down in tears when she learnt that her husband Mr Habib had sustained a severe spinal injury. He was in the passenger seat when the car that skidded and crashed into the lamppost. The rescue team had to pry him out and rushed him to the hospital. At that time, no one knew if he would make it.

Mr Habib had two previous accidents which injured his knees after being hit by a lorry and a bus. This latest accident was the third and the most serious one.

Following his discharge from the restructured hospital Mr Habib was admitted to St Luke's for rehabilitation.

He arrived in poor mental and physical shape. Unable to move his arms and legs, he was constantly in bed and developed bedsores which caused him much discomfort. Mr Habib recounted how Senior Nurse Manager Theresa Chuah and her team at ward 4B painstakingly took care of his wounds and encouraged him not to give up. The intensive therapy sessions he had over the next few weeks helped him regain some movement in his limbs.

With the injuries he sustained, Mr Habib could not return to work. This depleted his savings and affected his finances. St Luke's medical social workers stepped in to help them find subsidies from various sources to reduce their financial burden. With their help,

Mr Habib was also able to get a motorised wheelchair and is now coping well.

After his discharge from St Luke's, Mr Habib has been returning for his quarterly follow-ups and the staff were amazed by his recovery. Mr Habib shared, "I thought it was over for me after my third accident, but God and the healthcare professionals saved my life. I try to stay positive during my recovery and now finally, I am able to feel some sensation in my legs and move my arms."



Taking One Step At A Time

If you had met Irene before 2014, you would find a young lady working on her career and enjoying life like the rest. But things changed when Irene was diagnosed with cerebellar lesion due to acute disseminated encephalomyelitis in December 2014. Acute disseminated encephalomyelitis is an immune-mediated inflammatory disorder characterised by a widespread attack of inflammation in the brain and spinal cord that damages myelin – the protective covering of nerve fibers.

She was admitted to the hospital for treatment till January 2015. When she was discharged, she went to a community hospital for her rehabilitation and became a client at St Luke's Hospital's Day Rehab Centre in February 2015.

Irene was referred for speech therapy by her occupational therapist, Charissa Tan, while she was at St Luke's. Charissa felt that Irene's speech was unclear. Irene was diagnosed with dysarthria, a motor speech disorder caused by impairment to the muscles involved in speech production. The disorder made her speech slurred and monotonous.

Her medical condition affected her cognitive

communication abilities as well. She had difficulty maintaining eye contact with her communicative partner and had reduced communication intent. She also had difficulty in some executive functions such as planning, organisational skills and emotional control.

This led to her low self-esteem, something she wanted to overcome. With the help of her speech therapist, Siew Wei, Irene underwent weekly speech therapy sessions, and subsequently went for sessions once a month as she improved. She was trained to read text with multisyllabic words and in different intonations. There was also role-play of speaking in different scenarios to improve her social pragmatic skills. During her free time, she would write in her journal, and practise speaking, reading and writing.

Taking things one step at a time and through sheer determination, her speech has improved. Now, she only has some difficulty pronouncing multisyllabic words and slight monotonous speech. Her communication skills have improved

as well. She has better eye contact with her communicative partner and provides quicker response.

To help boost her self-esteem, Siew Wei encouraged her to register as a volunteer at St Luke's. Through volunteering, she familiarised herself with administrative tasks, preparing for her new job. It also gave her the opportunity to meet more people to practise her speech and socio-pragmatic skills.

Recently she volunteered in the chronic aphasia group therapy. She enjoys being part of the group therapy, helping people with communication difficulties. In one of her cognitive behavioural therapy session, she shared that she feels her life is more fulfilling. With ongoing therapy and volunteer work, Irene is slowly working towards boosting her self-esteem.

*Not her real name



Our Rehabilitation Initiatives

Gym Tonic Day Rehab Centre

The gym tonic project anchored the concept of "Exercise-As-Medicine" (EAM) with the frail elderly in the community. The therapists implemented a systematic way of assessing, treating and evaluating clients. By using modern technology and safe exercise equipment (HUR exercise equipment), the project aims to improve clients' functional status and strength.

The programme was soft launched in mid-December 2015 while the therapist underwent training evaluation in January 2016. The programme was launched in January 2016.



Home Engagement Programme (HEP)

When a client recovers from a stroke, they may face difficulties doing simple tasks, leading to negative emotions and a loss of self-efficacy.

The therapists at St Luke's promote a positive focus on returning to meaningful life roles and occupations as the patient recovers. Working with clients from the home engagement group programme started in 2015 to help them regain the confidence to function in their daily activities. The programme allowed

clients to start participating more actively at home in activities besides self-care (Instrumental Activities of Daily Living) in spite of their bodily limitations through a unique combination of activities planned by the therapists in a simulated environment.

The clients would start off with light exercises before they engaged in activities specially designed for them. Some of the activities the clients might do include laundry, food preparation

and basic household chores. At the end of the 2-hour programme, they would document their progress in a home engagement diary.

Working with the therapists weekly, the clients have a support group to make friends along the way with fellow patients, increasing their confidence as they work towards their recovery.

Day Rehabilitation Centre (DRC) Stroke Training with Active Rehabilitation (STAR) Programme

During conventional stroke rehabilitation, lower-functioning patients require substantial amount of direct facilitation from the therapist to perform repetitive and function-orientated upper limb tasks. This limited the number of patients that could be seen in a session.

DRC's STAR Programme was developed to integrate evidence-based upper limb modalities to

- Enhance efficiency of service delivery
- Improve clinical outcomes within a five month treatment timeframe

The patients are assessed and given the appropriate form of therapy based on their medical conditions. Guided by the therapist, patients undergo programmes that incorporate robotic equipment and virtual reality as they start on their recovery journey.



Rehab

Our Achievements

St Luke's Hospital continues to provide training for clinical staff and undergraduate medical students.

To help keep healthcare professionals updated on the latest trends and developments in healthcare, St Luke's Hospital continues to provide training for clinical staff and undergraduate medical students. Over the past year, our staff members have published

in journals, and participated in poster and oral presentations. Our wound care nurses continue to educate nurses from the Intermediate and Long Term Care sector on the latest trends and development of wound care through the annual wound conference.

Poster Presentation

Best Poster Award (MSW)

- Issues Faced by Caregivers of Persons with Dementia in a Community Hospital

Authors

- Phua Li Lian
- Cheung Siew Li
- Sarah Lim
- Laura Lim
- Jasmine Yong
- A/Prof Tan Boon Yeow

Oral Presentation

Best Innovation Oral Paper Presentation Award

Challenges of Developing and Facilitating an Occupation-Based Programme: The Home Engagement Group

Authors

- Charmaine Koh

Publications

Markers of Cardiac Dysfunction in Cognitive Impairment and Dementia.

- Co-authored by A/Prof Tan Boon Yeow.

Cortical microinfarcts on 3T MRI: Clinical correlates in memory-clinic patients. Alzheimer's Dementia.

- Co-authored by A/Prof Tan Boon Yeow.

Nutritional, Physical, Cognitive, and Combination Interventions and Frailty Reversal Among Older Adults: A Randomized Controlled Trial.

- Authored by A/Prof Tan Boon Yeow and Gribson Chan.

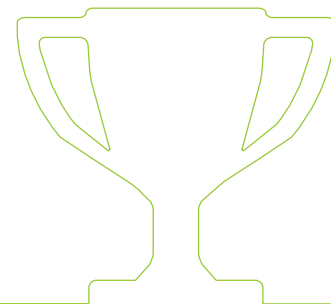
Conferences

St Luke's Wound Conference 2015

The nurses at St Luke's Hospital organised the 9th edition of St Luke's Wound Conference, which is held annually. Aptly themed "Algorithm vs Jigsaw Approach", healthcare professionals who actively participate in wound management have to rethink their approach when they care for their patients.

As the population ages, the occurrences of skin break down and wounds have also risen. Wounds and its implications not only

reduce the quality of health in the elderly, but also prolong their stay in the hospitals. Nurses can be empowered to play a leading role in advancing care for patients, especially in the area of wound care. Attracting over 250 participants, the conference brought like-minded healthcare professionals together as they were updated on the latest in wound care management.



Staff Achievements

While we continue to transform community care, our people are at the heart of everything we do. They interact with patients, encourage them during their recovery with us and go beyond the extra mile to care for them. Their dedication to provide quality care has not gone unnoticed.

Healthcare Humanity Award 2015



Ho Mei Kiu, Heidi
Senior Patient Service Assistant

Sng Bee Li
Senior Medical Social Worker

Sarah Lo
Occupational Therapist

ILTC Manpower Development Awards

- Kavitha D/O Sanmugam
Senior Staff Nurse
Master of Nursing (NUS)
- Brenda Loh
Care Coordinator
Master in Gerontology (UniSIM)
- Huang Bao Xian
Physiotherapist
Degree in Physiotherapy (SIT)
- Gan Jing Tap
Physiotherapist
Degree in Physiotherapy (SIT)
- Tiffany Tam Cheuk Yiu
Occupational Therapist
Bachelor of Science (Occupational therapy) (Curtin University Australia)
- Goh Ling Ling
Staff Nurse
Advanced Diploma in Nursing (Gerontology) (NYP)
- Licayu Mary Grace
Staff Nurse
Advanced Diploma in Nursing (Orthopaedics) (NYP)



Looking Towards The Future

Dementia Care

St Luke's operated a dementia ward in 2007 with 16 beds. Over the years, we added an activity corner and enhanced the ward to be fully dementia friendly with a homely feel, while encouraging patients to be independent. The dementia care team has been working behind the scenes to lay the foundation to increase awareness of dementia care among caregivers, staff and volunteers.

Some of the plans in the pipeline include outreach programmes, educational talks, dementia care groups and empowering caregivers. St Luke's is looking at how to reduce caregivers' stress and there are also plans to conduct caregiver support groups.

As St Luke's is well placed in the community with its eldercare centres, the hospital's dementia care team is looking to collaborate with St Luke's ElderCare in screening and diagnosis to facilitate early detection. As an integrated day care centre, St Luke's ElderCare

also cares for elderly with mild to moderate dementia. Clients participate in reality orientation exercises, games and small group discussions.



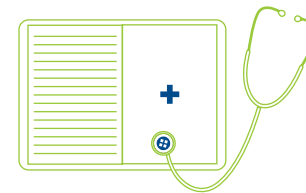
Community Wound Centre

The total number of wounds treated annually at St Luke's Hospital has increased substantially in the last 5 years, from 971 cases in 2010 to 1444 cases in 2014.

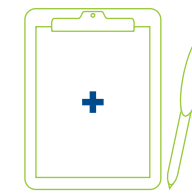
To train the next generation of nurses in wound care, St Luke's Hospital (SLH) planned to develop St Luke's Community Wound Centre.

The development of the wound centre is in line with St Luke's mission to enrich lives in the communities. It seeks to enhance wound care

management in the Intermediate and Long Term Care (ILTC) sector, by strengthening 3 areas:



Education and Training



Research



Development

Education and Training

SLH has been conducting wound courses for its staff since 2002 and for external participants since 2004. In 2007, with its team of 21 experienced wound care nurses, we started conducting Basic and Intermediate wound care courses that are accredited by the European Wound Management Association (EWMA). We extended wound care courses to primary and tertiary care as well as overseas participants from the Philippines, Thailand, Hong Kong, Malaysia and China.

To further fulfil a growing need for wound education, the Centre plans to conduct wound courses at an Advance level, in collaboration with local educational institutions as well as overseas universities. These collaborations are built upon a strong network that SLH has established over the years with like-minded wound care practitioners and academia, both locally and internationally. When the Wound Centre is completed, a Wound Ward will be managed by experienced wound

care nurses. These nurses will provide expert knowledge and clinical know-how for course participants of the Basic, Intermediate and Advance level. They would also collaborate with their healthcare team members in managing complex wounds.



Research

Once completed, the centre would house a Research Unit to evaluate clinical outcomes of wound care practice at SLH. The team of nurses would also review new models of treatment modalities with a view of adopting evidence-based modalities as adjuncts to optimise wound healing. Some modalities include:

- Topical Negative Pressure Therapy
- Maggot Therapy
- Ultrasound Debridement
- Wireless Micro Current Stimulation.

As wound care continues to improve, nurses at St Luke's developed and strengthened alliances with local and overseas academic institutions to take wound care to the next level. The collaboration consists of staff attachment for advance training, and visits from experts to help to train our nurses and raise our standard in wound care. The strong bonds formed with various wound product specialists provides a test bed to trial new wound care products and their efficacy before they are officially launched in the market.

Development

As patients are admitted to St Luke's Hospital with more complex wounds, the team continues to develop new clinical pathways to better treat wounds. The wound centre would include new sub-specialty wound services to provide focused follow-up and management of various types of wounds.

These services include Sitting Clinic, Diabetic Clinic & Lymphedema Clinic. To provide wound management beyond institutional care, St Luke's Hospital plans to expand its capacity and capability to provide wound care services at the 14 eldercare centres islandwide.



Our Volunteers

St Luke's Hospital works closely with volunteers to deliver quality care for our patients. Working with corporate organisations, like-minded individuals, church partners and educational institutions, our volunteers bring their own experiences to help us put a smile on patients' faces.

The volunteer management team at St Luke's conducts basic courses in volunteering to equip our volunteers with the basic skills such as patient transfer and handling. We are very blessed to have dedicated volunteers who spend their time with our patients.

Fundraising For Our Patients

Dymon Asia - St Luke's Appeal Luncheon

St Luke's Hospital organised the Dymon Asia – St Luke's Appeal Luncheon in 2015 to raise funds for St Luke's. The luncheon also saw the book launch and photo exhibition by award winning photographer, Richard Koh, with part of the proceeds from the book launch donated to St Luke's.

The book, titled "Over Singapore", features 120 aerial photographs of Singapore, giving readers a fresh perspective of the small tropical island. The beautifully taken photographs were complemented by text and captions from Ambassador-at-Large Professor Tommy Koh.

MG[Acts]

The Secondary 4 students from Methodist Girls' School (MGS) organised MG[Acts], an annual fundraiser comprising a marketplace, concert and talent competition on 12 March 2016 to raise funds for St Luke's.

Hongbao Donation Drive

St Luke's Love & Share Hongbao Donation Drive 2016 saw great support from the various schools and churches. We had an increase in the number of donors from 30 in 2015 to 38 schools and churches in 2016.

Three of the participating kindergartens also extended the Chinese New Year festivities to our patients by performing for them, and giving them mandarin oranges and goodie bags.

St Luke's Charity Golf

St Luke's Charity Golf took place on 19 June 2015 at Singapore Island Country Club. Guest-of-Honour, Minister for Health, Mr Gan Kim Yong shared on the importance and reality of an ageing society and applauded St Luke's for the work we do.

St Luke's Mid-Autumn Charity Concert

St Luke's Hospital is blessed to have a group of dedicated volunteers spending their time with us, caring for our patients. One such volunteer is Christina Tan. Christina and her group, Joyous Volunteers, organised a dinner for over 300 guests, raising funds through table sales and donations on the night.

Sponsored by Chosen Holdings, Christina and her group put up an excellent performance of songs and dance with beautifully choreographed moves and elaborate costumes.

Wesley Easter Offering

Wesley Methodist Church continued with their strong support during their Easter Sunday offering. The money raised helps our patients who require financial assistance.

Serving

Committees

Executive Committee

Dr Peng Chung Mien – Chairman
Dr Ernest C.T. Chew - Vice Chairman
Mr Jeyaraj Indra Raj - Secretary
Mr Choo Eng Beng - Treasurer

Nomination Committee

Dr Peng Chung Mien - Chairman
Dr Ernest C.T. Chew
Mr Khoo Teng Cheong

Audit Committee

Prof Ho Yew Kee - Chairman
Mr Graham Berry
Mr Phillip Lee
Mr Yeo Ek Khuan
Mr Ho Kuen Loon

Chaplaincy Committee

Dr Ernest C.T. Chew - Chairman
Dr Danny Ng Bock Hon
Rev John Chang Jen Yen
Rev David Lim Chee Kwang

Medical Advisory Committee

A/Prof Pang Weng Sun - Chairman
Dr Chan Kay Fei
Ms Chor Swee Suet, Judy
Dr Gerald Chua
Dr Goh Siew Hor
A/Prof Aymeric Lim
A/Prof Lim Lean Huat
A/Prof Louis Tan Chew Seng
Dr Jason Yap

Human Resource Committee

Mr Khoo Teng Cheong - Chairman
Ms Seah Yen Goon
Mr William Thien
Mrs Wee Soo Jong
Dr Goh Khean Teik

Fundraising Committee

Mr Jeyaraj Indra Raj - Chairman
Dr Eileen Aw
Mr Choo Eng Beng
Mr Victor Lim

Investment Committee

Mr John Lau Tai Chong - Chairman
Mr Ho Li Wen
Ms Michelle Tan

Medifund Committee

Mr Francis Maniam - Chairman
Dr Goh Soon Noi
Ms Gwee Pek Hoon
Ms Ho Gang Hiang
Mr Lee Kim Hwee David

Advisory Council

Dr Eileen Aw
Dr Bobby E K Sng
Prof Lee Hin Peng

IPC Number

HEF0004/G

IPC Status

Effective Date – Till 22 September 2017

Charity Registration Number

1036

Charity Registration Date

2 August 1994

ROS / RCB Registration UEN

199205095C

Constitution

Public Company Limited by Guarantee.
Established 22 September 1992

Subsidiary

St Luke's ElderCare



Registered Address

2 Bukit Batok Street 11, Singapore 659674

Auditor

Moore Stephens LLP

Banker

DBS Bank Ltd



St Luke's Hospital is in compliance with the Code of Governance for Charities and IPCs. Its Governance Evaluation Checklist can be viewed at the charity portal

www.charities.gov.sg

Engaging



St Luke's Hospital
2 Bukit Batok Street 11
Singapore 659674

 6563 2281
 6561 8205

 general@stluke.org.sg
 www.stluke.org.sg